

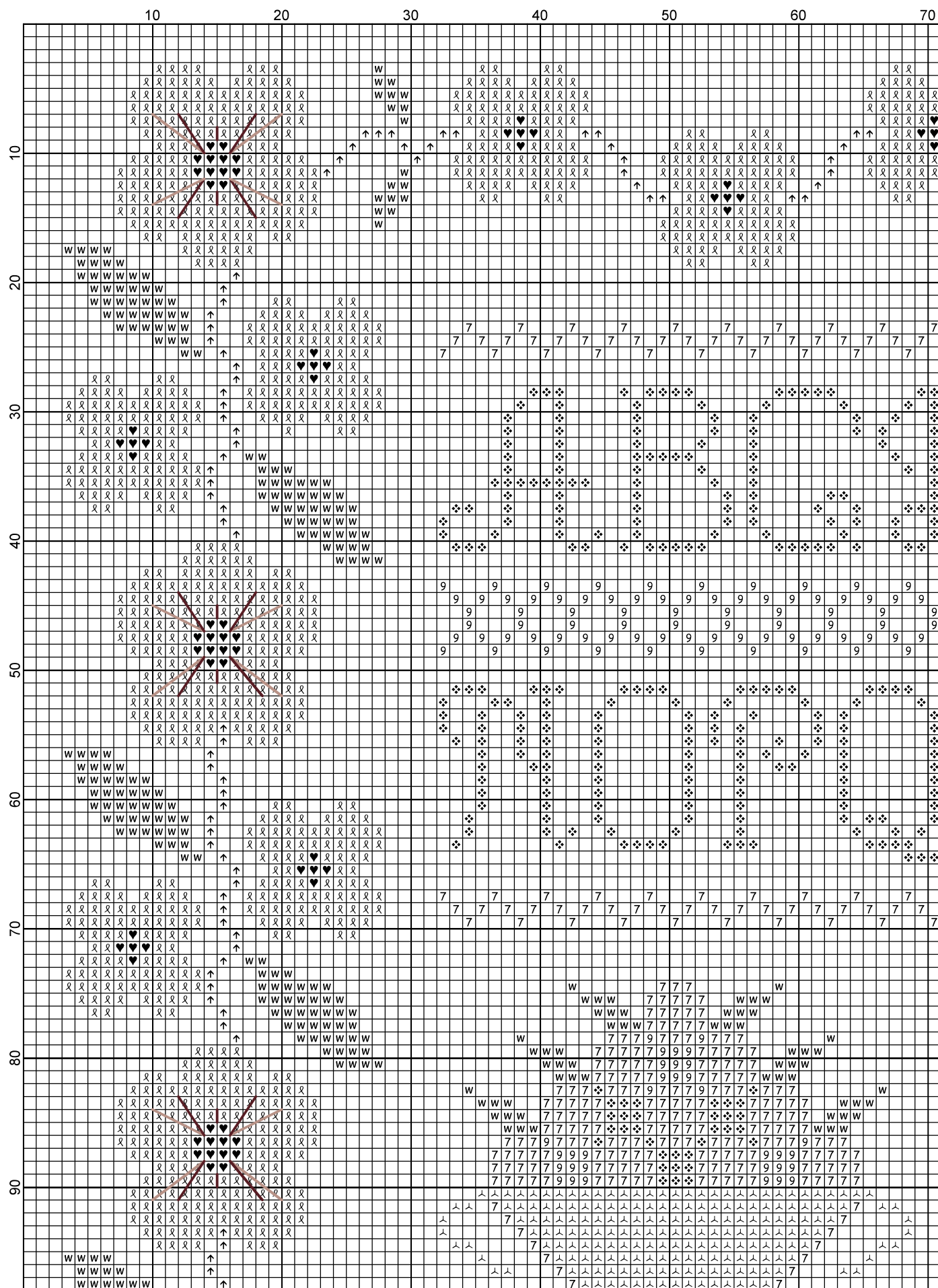


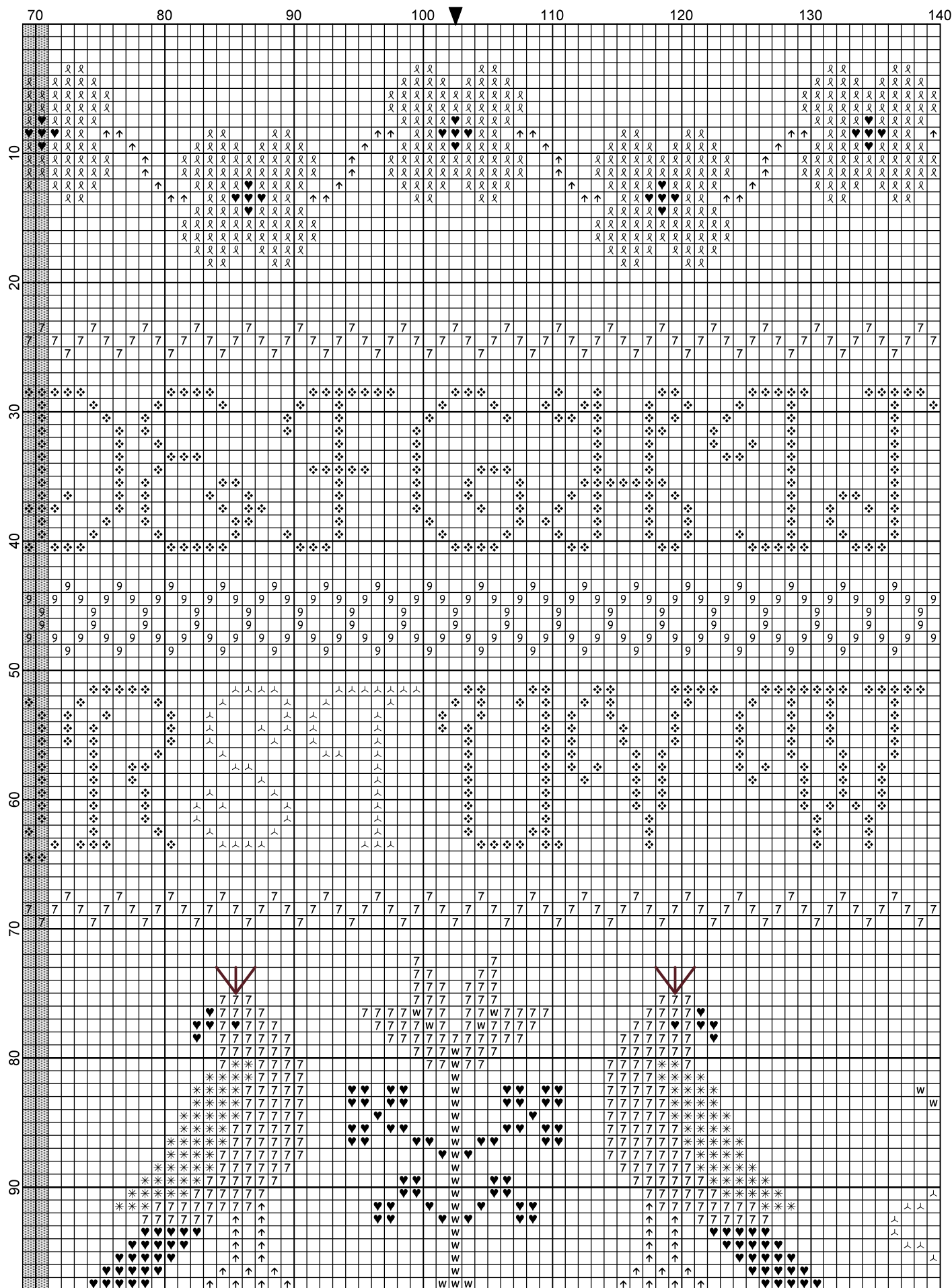
Like a cherry blossom

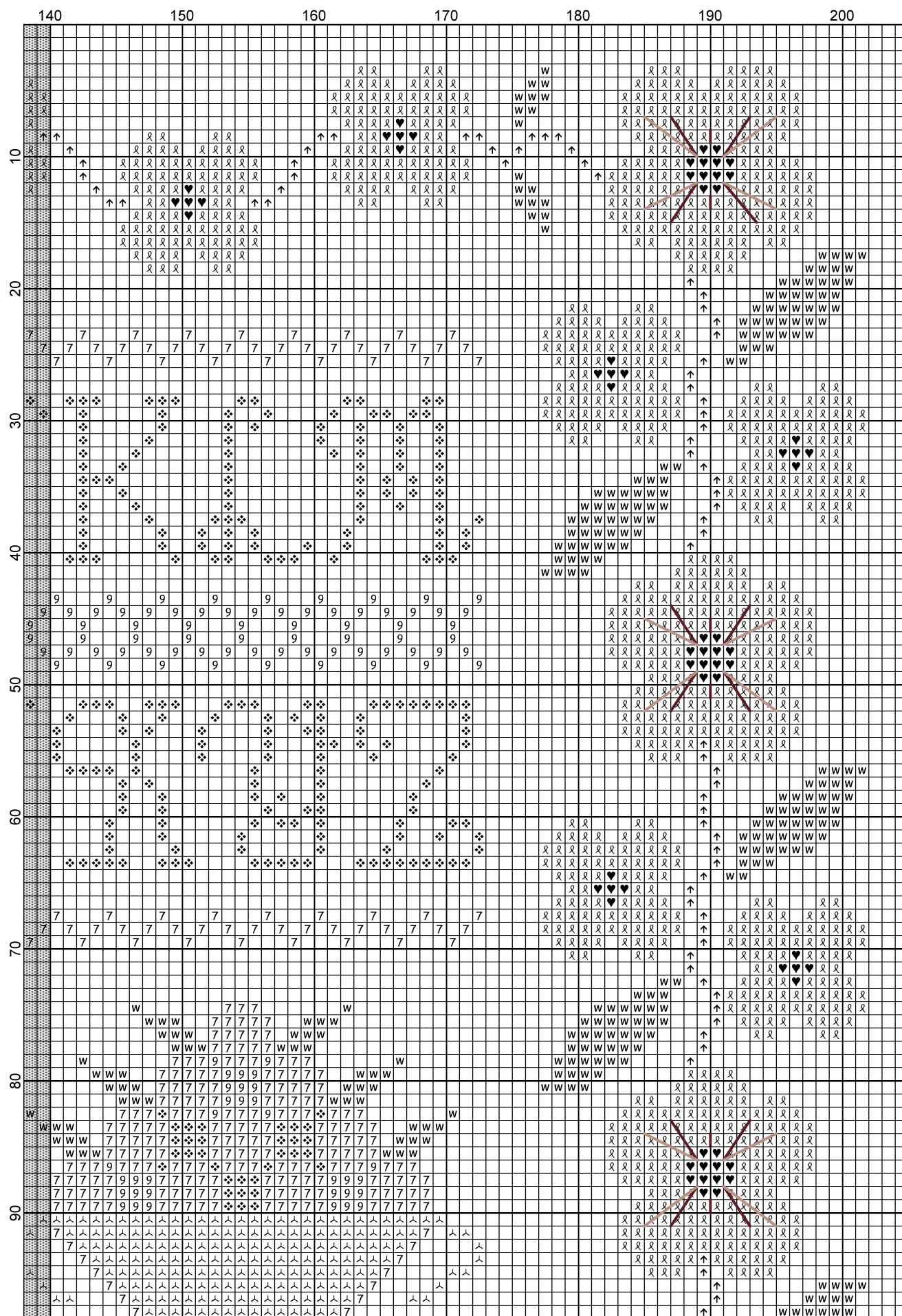


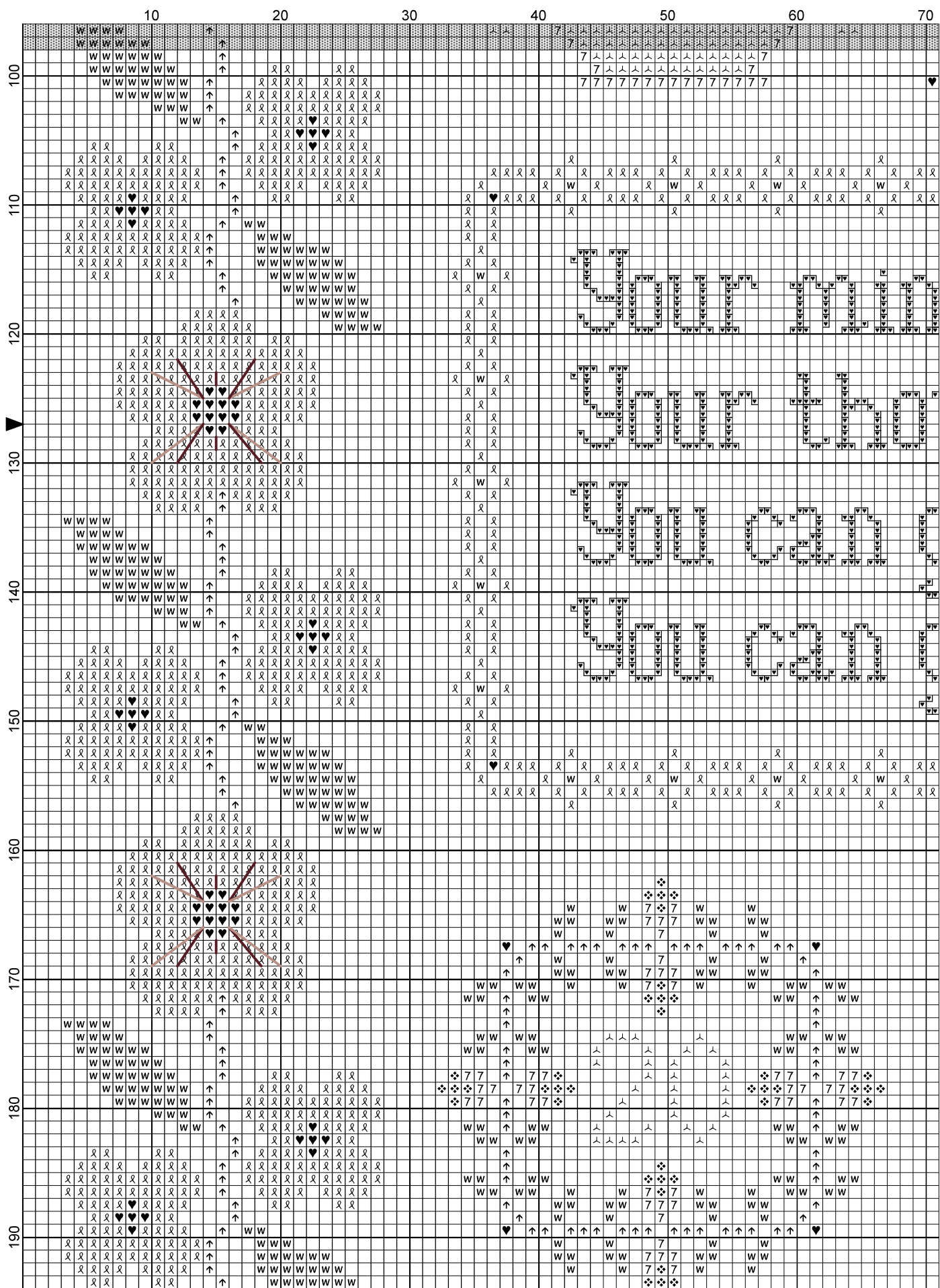
Cross stitch pattern
199w X 248h stitches

© Lana Lenskaya, 2020

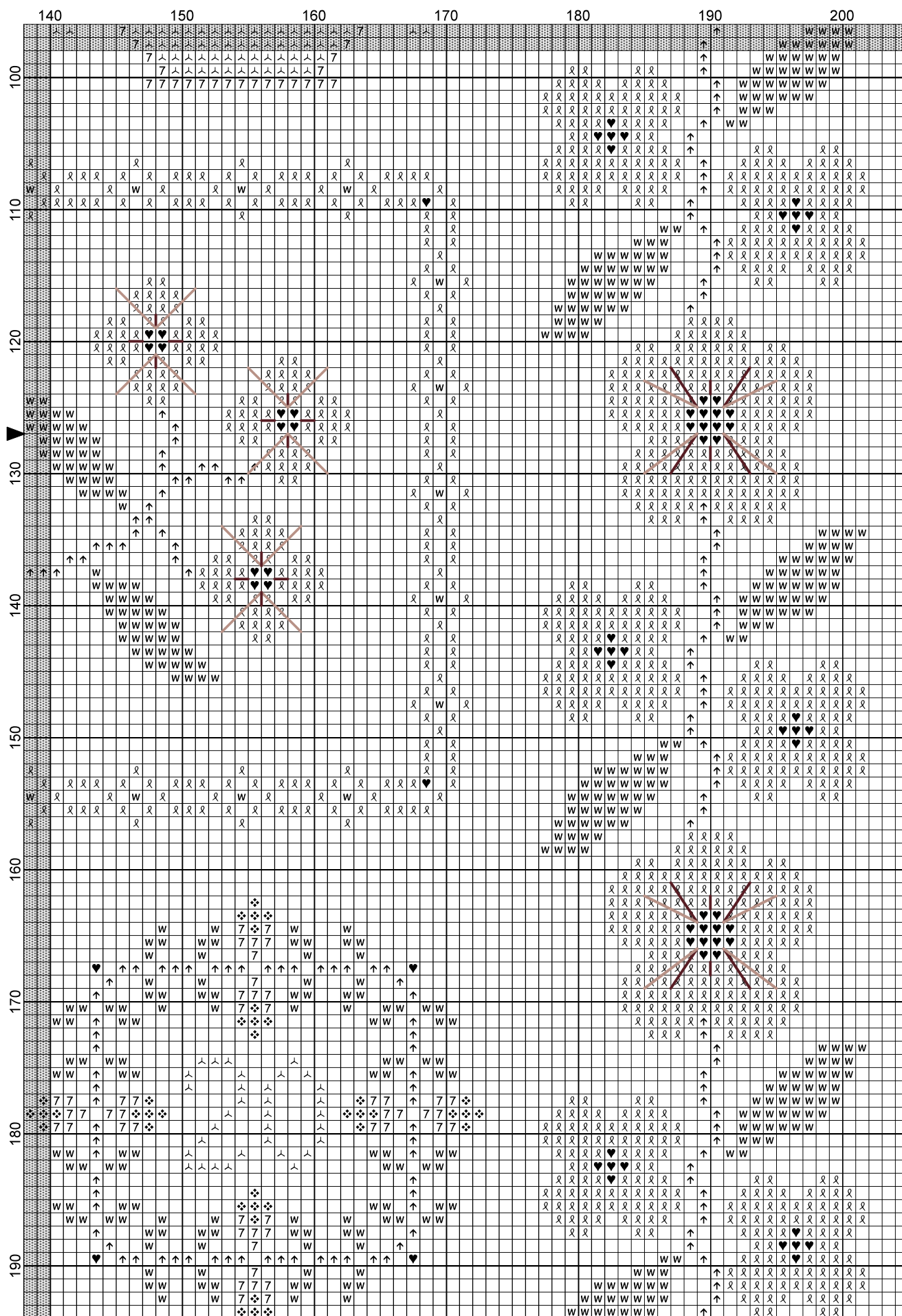


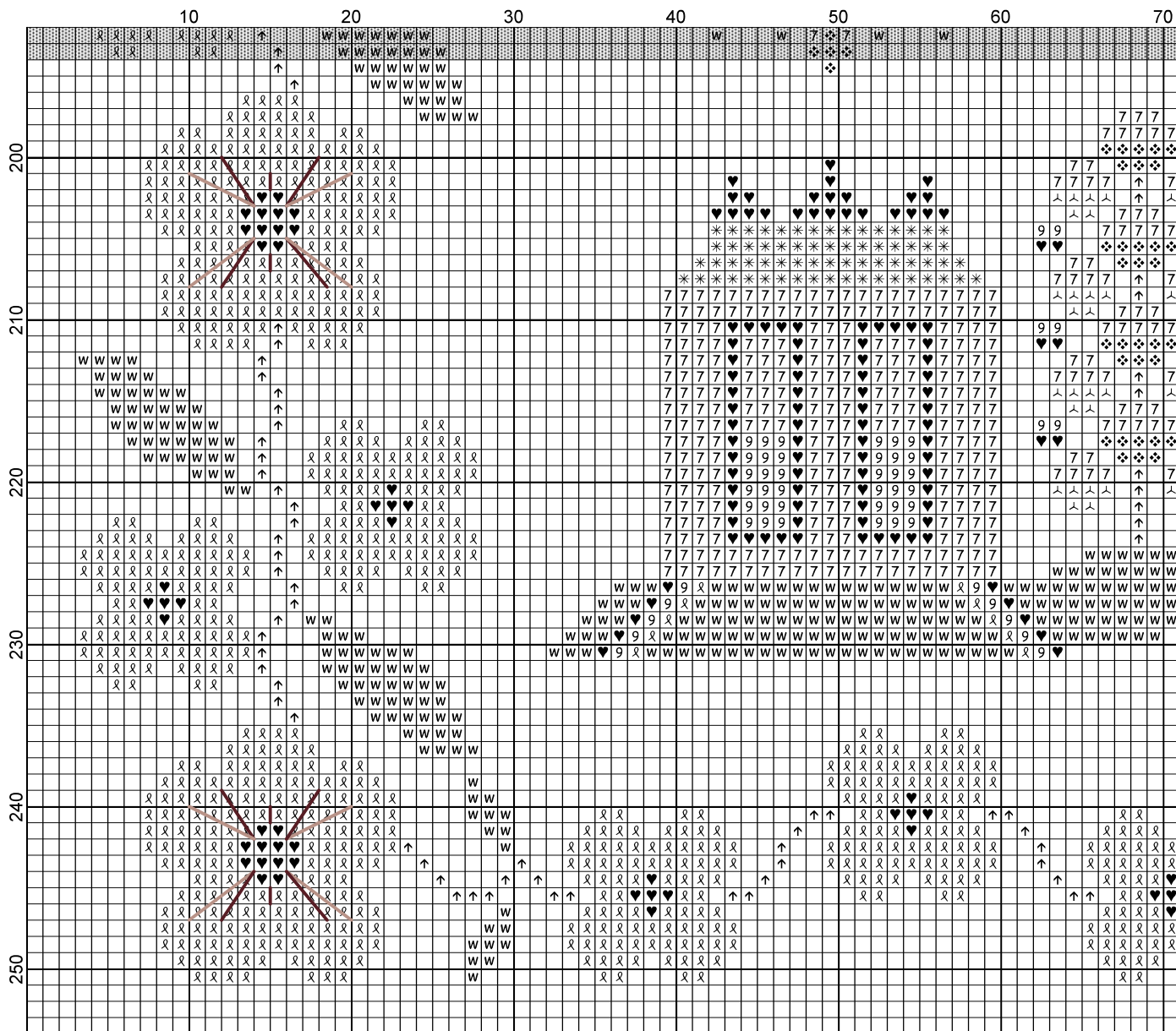












	70	80	90	100	110	120	130	140
70								
71								
72								
73								
74								
75								
76								
77								
78								
79								
80								
81								
82								
83								
84								
85								
86								
87								
88								
89								
90								
91								
92								
93								
94								
95								
96								
97								
98								
99								
100								
101								
102								
103								
104								
105								
106								
107								
108								
109								
110								
111								
112								
113								
114								
115								
116								
117								
118								
119								
120								
121								
122								
123								
124								
125								
126								
127								
128								
129								
130								
131								
132								
133								
134								
135								
136								
137								
138								
139								
140								
141								
142								
143								
144								
145								
146								
147								
148								
149								
150								

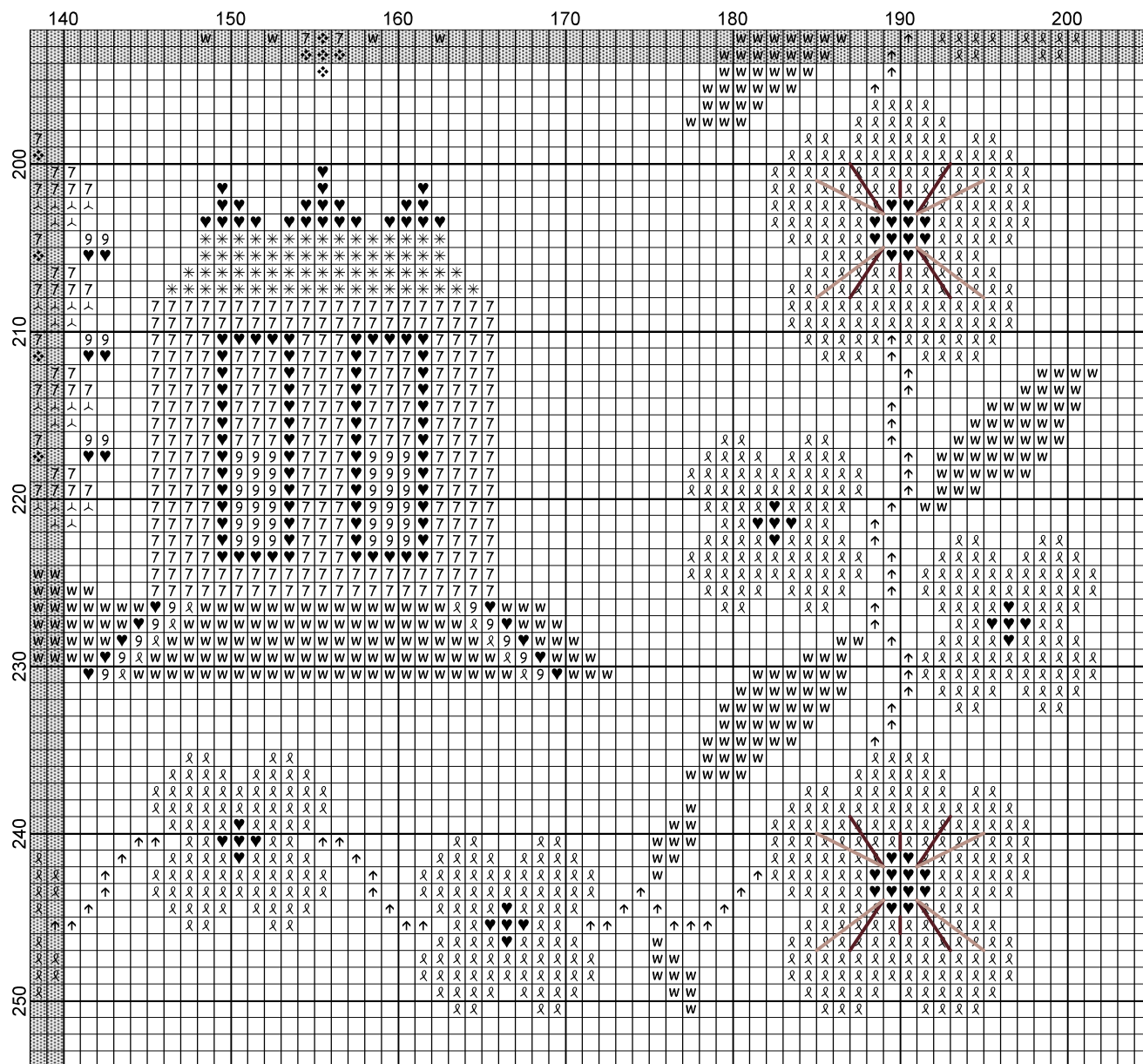


Stitches Through The Years

© Lana Lenskaya, 2020

Like a cherry blossom

Stitches Through The Years

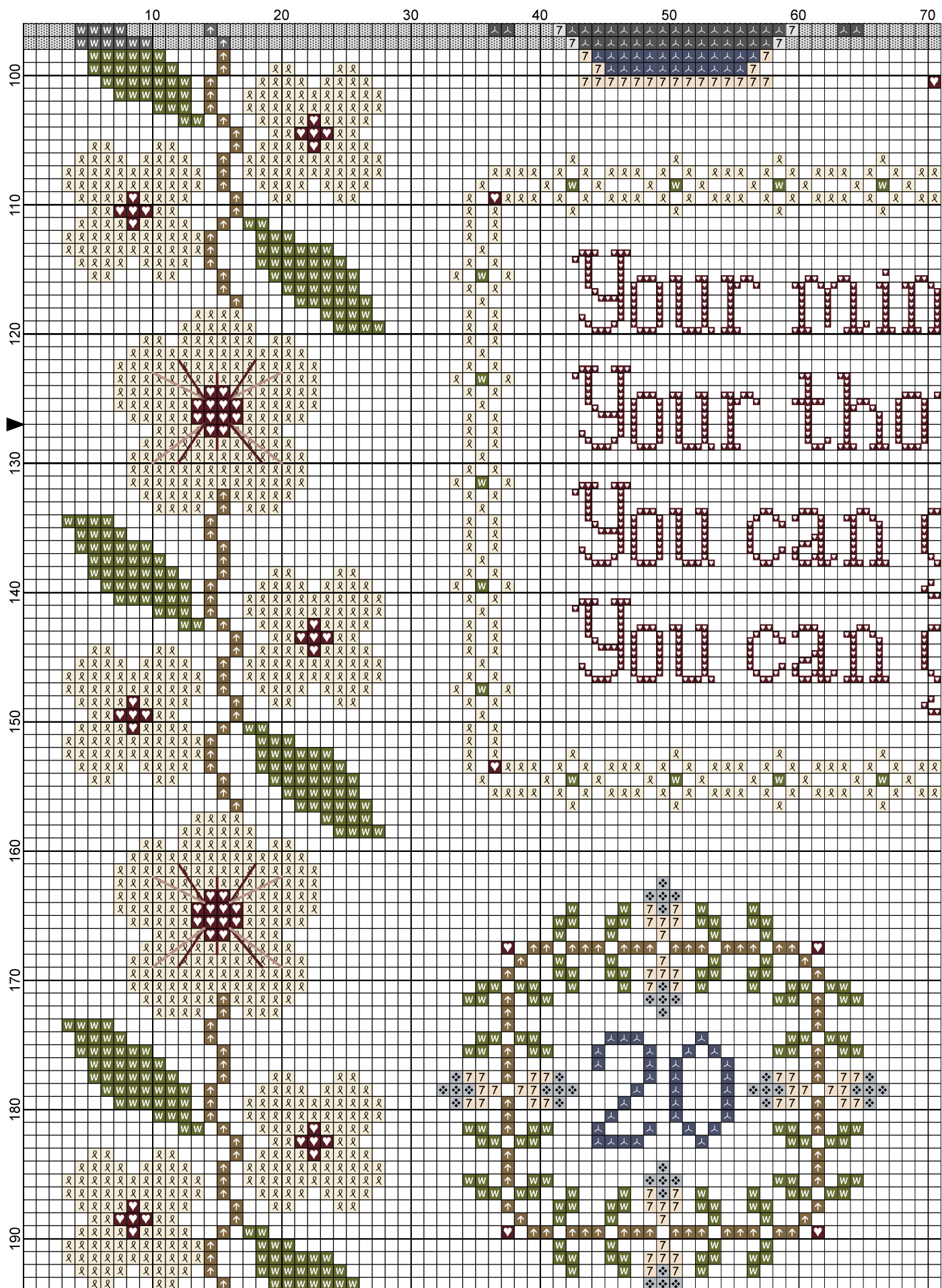


© Lana Lenskaya, 2020







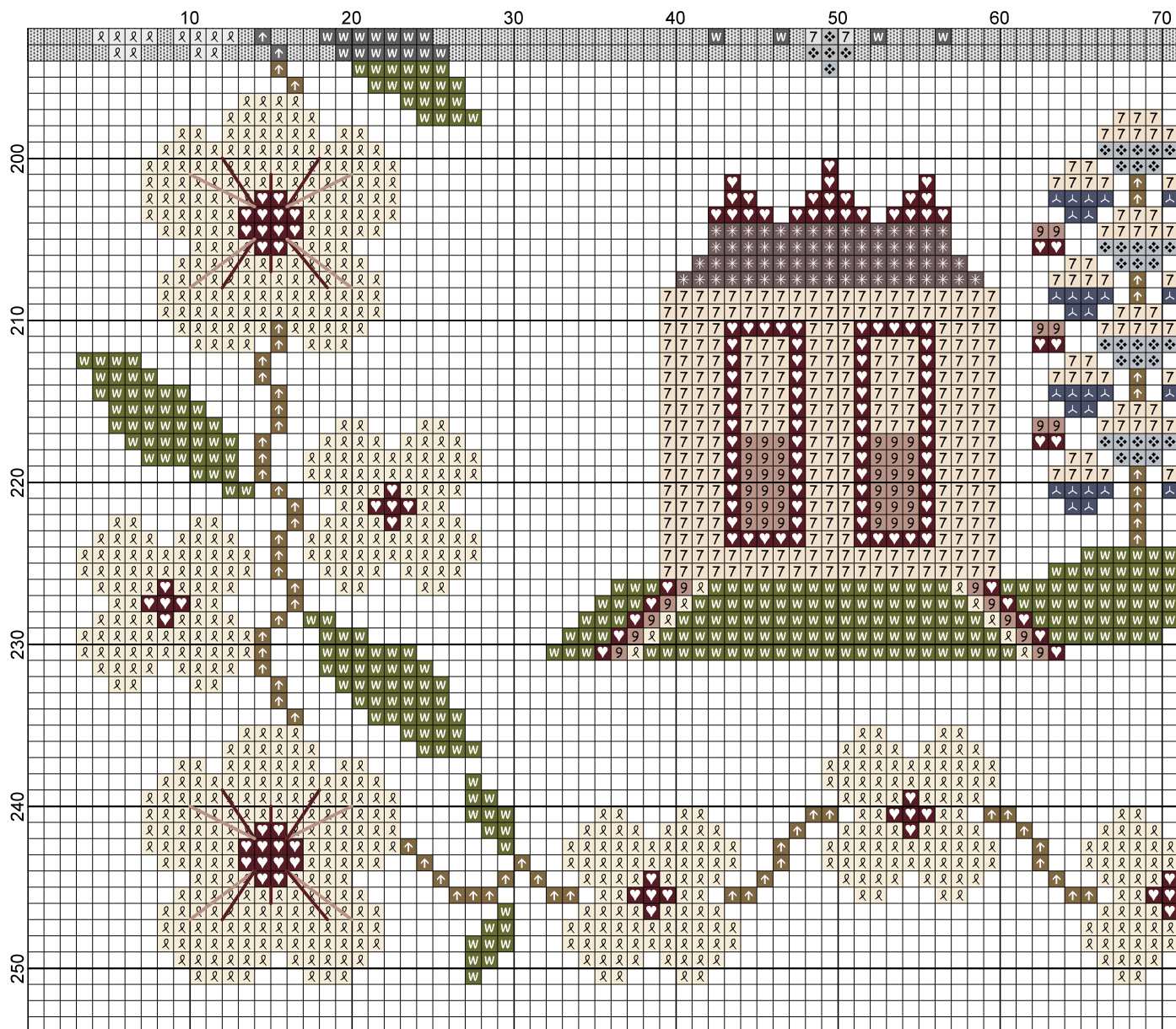






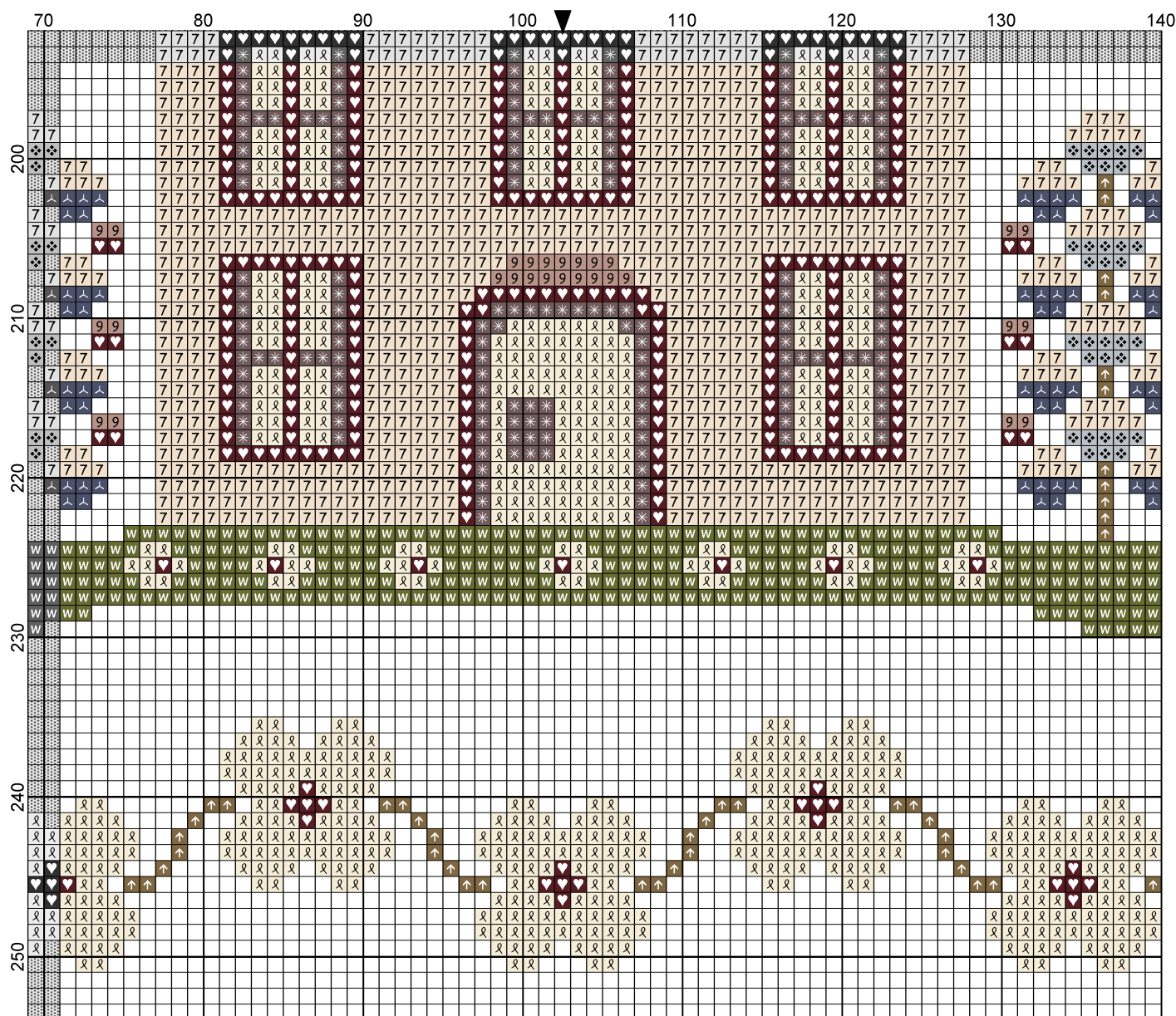
Like a cherry blossom

StitchesThroughTheYears



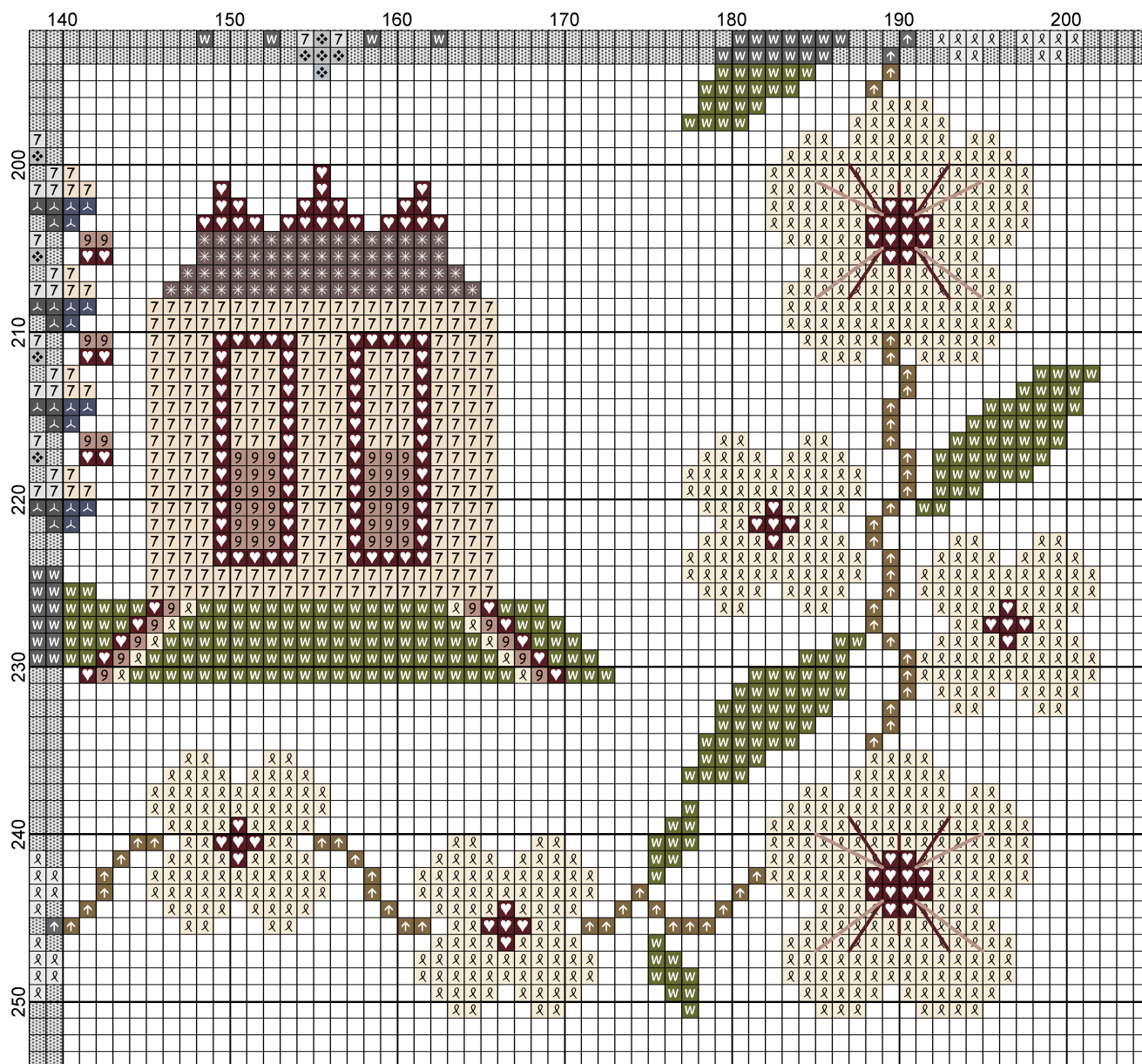
StitchesThroughTheYears

© Lana Lenskaya, 2020



Stitches Through The Years

© Lana Lenskaya, 2020



Like a cherry blossom

Stitches Through The Years

Pattern name: Like a cherry blossom
 Designed by: Lana Lenskaya
 Company: Stitches Through The Years
 Fabric: 40 Newcastle Linen
199w X 248 stitches
 Size: 40 count, 25,3w X 31,5h cm










The model was stitched on 40 ct. hand-dyed Newcastle Linen by @ravnomerka_na_trave using 1 strand of floss over 2 threads of linen, except where noted. Alternative fabrics: Vintage Fawn by Lakeside Linen, Shale by Picture This Plus, Sprite by Picture This Plus.

DMC color conversions are given, although results will not be the same as original key. Using DMC threads will not provide you with the same look as the cover model.


Special Notes:

- Cross stitch with 1 strand of floss over 2 linen threads.
- Stitch the quote with 1 strand of GA Grape Arbor floss (or DMC 315/3860) over 1 linen thread.
- I stitched my initials using WDW 1295 Blackboard in the alphabet.
- You will need 2 skeins Anchor 880 (or DMC 951) thread.





Floss used for Full stitches:

Symbol	Strands	Type	Number	Color	...or DMC
	1	Anchor	880	Copper - It	951
	1	Anchor	1080	Taupe - It	3893
	1	WDW	1232a	Olicloth	610
	1	WDW	1295	Blackboard	317/535
	1	WDW	1299	Porpoise	04
	1	WDW	2326	Stone	840/3726
	1	GA	0440	Maple Syrup	3781
	1	GA	7022	Grape Arbor	315/3860
	1	CC	115	Cinnamon Toast	407

Floss used for Petite stitch:

Symbol	Strands	Type	Number	Color	...or DMC
	1	GA	7022	Grape Arbor	315/3860

Floss used for Back stitches:

Symbol	Strands	Type	Number	Color	...or DMC
	1	GA	7022	Grape Arbor	315/3860
	1	WDW	1299	Porpoise	04
	1	CC	115	Cinnamon Toast	407
	1	WDW	2326	Stone	840/3726

* WDW - Weeks Dye Works, GA - The Gentle Art, CC - Classic Colorworks

Numbers to personalize your sampler:

